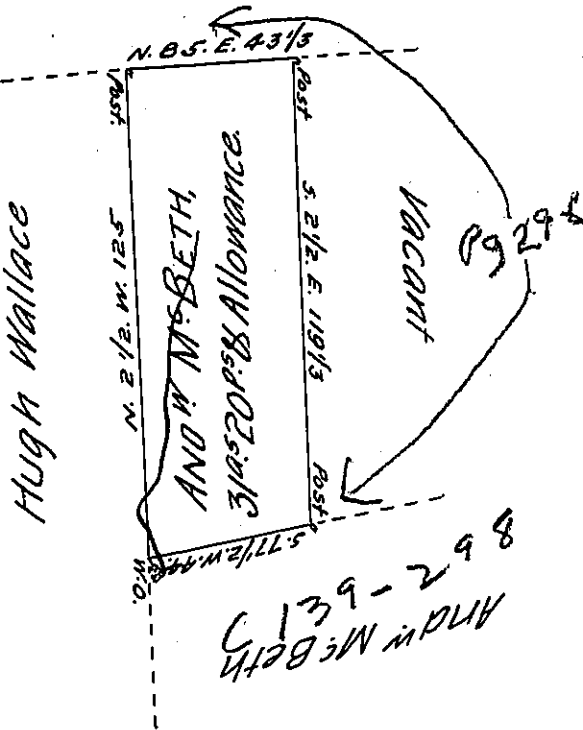


Josiah Galbreth



The Draught of a Tract of Land Situate in Rye Township, Cumberland County,  
 Containing Thirty one Acres and Twenty perches and Allowance of Six  $\frac{1}{2}$  Cent for  
 Roads  $\frac{1}{2}$  Surveyed August 20<sup>th</sup> 1795, in pursuance of a Warrant granted to  
 Andrew McBeth, Dated August 4<sup>th</sup> 1788.

By Saml Lyon, D.S.

To Daniel Brodhead, Esquire,  
 Surveyor General of Pennsylvania.

IN TESTIMONY that the above is a copy of the original remaining on file in  
 the Department of Internal Affairs of Pennsylvania, made  
 conformably to an Act of Assembly approved the 16th day of  
 February, 1833, I have hereunto set my Hand and caused  
 the Seal of said Department to be affixed at Harrisburg,  
 this sixteenth day of February 1906.

*Loae B. Brown*  
 Secretary of Internal Affairs.